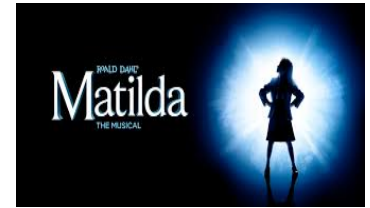




Executive Director: Judy Stene
Director: Julie Lucido



AUDITION RULES AND INFORMATION

Matilda The Musical

October 3 and October 4 | 10:00 am – 4:00 pm (By Appointment)

Location: Sierra Vista Mall | CMT Rehearsal Space

AUDITION & CALLBACK DETAILS

The performer age range for this production is 9-20 years old. Performers ages 7-8 with prior stage experience may audition, however, the director reserves the right to refuse to cast based on his or her evaluation of the child's readiness. See **Age Policy** below.

Pre-registration and pre-payment are required. See refund policy for details. An appointment time and arrival details will be provided after registration. **All who audition are cast. Small audition groups will be put together to allow for social distancing. Check-in and final audition details along with a scene to read will be provided in your confirmation email. See below for two-step registration process.**

Have 16 - 32 bars of a song of your choice (not from this show) memorized and bring sheet music (no auditions can be acapella). An accompanist will be provided. Music is available on www.musicnotes.com.

CALLBACKS will be Monday, October 5 at 6:00pm or by appointment as needed. If you are unable to attend callbacks please let us know at the time you audition.

Auditions, callbacks, and rehearsals are at Sierra Vista Mall (at the CMT rehearsal space next to Gold Coast Gallery). Special entrance instructions will be emailed to you prior to your appointment.

The Cast list will be posted by the Thursday night after auditions. **Rehearsals begin MONDAY, October 19th M-F from 6 pm - 9pm. Performances will be February 5-14.** All conflicts should be on calendar at time of auditions. Additional conflicts declared after casting could affect your role. If new conflicts come up after auditions you have until the first day of rehearsal to notify CMT. Conflicts requested after that date will be granted at the discretion of CMT. If you wish to change your current appearance (e.g. hair color, length, etc.) after casting please consult with your director first.

All performances will take place at the Fresno Memorial Auditorium in downtown Fresno.

AGE POLICY

Auditionees must be of the advertised age by audition weekend for any production. CMT reserves the right to request proof of age at any time. Note: Auditionees of the advertised age range will be considered first for casting all open roles. However, in the event that a role cannot be cast appropriately by the available pool of auditionees of the advertised age, CMT and the Director reserve the right to invite cast members from the community who are not within the advertised age range.

REFUND POLICY

Upon notification of casting decisions you are then entitled to a refund if you choose to withdraw from the production within **48 hours** of the cast list being posted, **however the \$25.00 processing fee paid at the time of auditions is non-refundable.** After that you **will not** be entitled to a refund under any circumstances.

ATTENDANCE POLICY

Due to the unpredictable nature of our current pandemic situation, our attendance policy will vary from the norm. All conflicts must be stated in advance, however, expect that you will not be called for every rehearsal. We have extended our rehearsal process over a much longer period of time to accommodate this plan and to limit the overall number of cast present at one time. Rehearsal dates will flex within the stated dates. Holiday breaks will also be provided. Expect 2-3 nights a week to start, and 3-5 nights a week after Thanksgiving break. The actual rehearsal dates for each cast member will be determined and communicated after casting. Weekly schedule updates will be provided throughout the process.

It is expected that this production will be a priority commitment. Each performer is required to attend all his/her scheduled rehearsals. All rehearsal conflicts must be communicated to CMT staff at auditions using the Production Registration form and/or any other forms required by CMT staff. If continued conflicts persist into the rehearsal process, performers may be removed from a production with no refund given. Even if conflicts are reported in advance; please be aware that missing rehearsal may prevent you from being staged into scenes and musical numbers. If this is a problem, we urge that you reconsider auditioning for this production. **Rehearsal schedules are subject to change.** Changes occur to make the most productive use of time and to create the most rewarding results. "Tech Week" is the last week prior to performances and attendance is MANDATORY, **No exceptions.** Rehearsals might run long and possibly late into the evening during the immediate week prior to performance, so please be prepared for this.

SPONSORSHIPS

Students in need of tuition assistance are encouraged to seek a sponsorship from local businesses, friends or family. Full tuition sponsors will receive two tickets to the show in which the student performs. Sponsorship forms are available on the website and at auditions. Please e-mail us with questions at cmtworks@sbcglobal.net.

COSTUME POLICY

CMT will provide costumes for all performers. Each performer will be responsible for providing his or her own shoe wear (if applicable), tights, undergarments and makeup for each production.

VOLUNTEERISM AND GETTING INVOLVED

Volunteers are a crucial part of our organization. Join **CMT Parent** - applications will be available at auditions. As a family-oriented organization all parents, guardians and family members are encouraged to get involved in the productions of CMT by helping with scenery construction, costume assistance, props, supervision, etc. **LOAD IN AND STRIKE ARE MANDATORY FOR ALL PERFORMERS (OR ONE PARENT IF PERFORMER IS UNDER 16). HOURS AND ASSIGNMENTS WILL BE SCHEDULED PRIOR TO BOTH DATES.**

GENERAL POLICIES

Notify staff regarding any special circumstances or medical requirements you might have. Parents/Guardians must check for adult supervision before leaving their children at rehearsals. CMT will not assume responsibility for children left unsupervised before posted rehearsal times. Parent/Guardian **MUST** pick up their child at the designated time and no later. **Additional monetary charges**, to the parent in question, may result for regular violation of this policy. All rehearsals are open to parents and guardians, **until tech week at Fresno Memorial Auditorium. Those rehearsals are closed. Detailed drop off and pick up instructions will be provided prior to tech week.** Auditionees must satisfy the tuition requirement before they will be allowed to audition. Auditionees must audition at one of the published audition dates and times. No auditionees will be allowed to audition outside these dates unless prior arrangements have been made with the Directors.

Conflict Calendar

Keep this copy with your conflicts noted for your own records.

Monday	Tuesday	Wednesday	Thursday	Friday	Saturday	Sunday
October 19 Rehearsal 6-9 pm	October 20 Rehearsal 6-9 pm	October 21 Rehearsal 6-9 pm	October 22 Rehearsal 6-9 pm	October 23 Rehearsal 6-9 pm	October 24 OFF	October 25 OFF
October 26 Rehearsal 6-9 pm	October 27 Rehearsal 6-9 pm	October 28 Rehearsal 6-9 pm	October 29 Rehearsal 6-9 pm	October 30 Rehearsal 6-9 pm	October 31 OFF	November 1 OFF
November 2 Rehearsal 6-9 pm	November 3 Rehearsal 6-9 pm	November 4 Rehearsal 6-9 pm	November 5 Rehearsal 6-9 pm	November 6 Rehearsal 6-9 pm	November 7 OFF	November 8 OFF
November 9 Rehearsal 6-9 pm	November 10 Rehearsal 6-9 pm	November 11 Rehearsal 6-9 pm	November 12 Rehearsal 6-9 pm	November 13 Rehearsal 6-9 pm	November 14 OFF	November 15 OFF
November 16 Rehearsal 6-9 pm	November 17 Rehearsal 6-9 pm	November 18 Rehearsal 6-9 pm	November 19 Rehearsal 6-9 pm	November 20 Rehearsal 6-9 pm	November 21 OFF	November 22 OFF
November 23 Rehearsal 6-9 pm	November 24 Rehearsal 6-9 pm	November 25 Rehearsal 6-9 pm	November 26 OFF	November 27 OFF	November 28 OFF	November 29 OFF
November 30 Rehearsal 6-9 pm	December 1 Rehearsal 6-9 pm	December 2 Rehearsal 6-9 pm	December 3 Rehearsal 6-9 pm	December 4 Rehearsal 6-9 pm	December 5 OFF	December 6 OFF
December 7 Rehearsal 6-9 pm	December 8 Rehearsal 6-9 pm	December 9 Rehearsal 6-9 pm	December 10 Rehearsal 6-9 pm	December 11 Rehearsal 6-9 pm	December 12 OFF	December 13 OFF
December 14 Rehearsal	December 15 Rehearsal	December 16 Rehearsal	December 17 Rehearsal	December 18 Rehearsal	December 19 OFF	December 20 OFF

6-9 pm	6-9 pm	6-9 pm	6-9 pm	6-9 pm		
December 21 Rehearsal 6-9 pm	December 22 Rehearsal 6-9 pm	December 23 Rehearsal 6-9 pm	December 24 OFF	December 25 OFF	December 26 OFF	December 27 OFF
December 28 Rehearsal 6-9 pm	December 29 Rehearsal 6-9 pm	December 30 Rehearsal 6-9 pm	December 31 OFF	January 1 OFF	January 2 OFF	January 3 OFF
January 4 Rehearsal 6-9 pm	January 5 Rehearsal 6-9 pm	January 6 Rehearsal 6-9 pm	January 7 Rehearsal 6-9 pm	January 8 Rehearsal 6-9 pm	January 9 OFF	January 10 OFF
January 11 Rehearsal 6-9 pm	January 12 Rehearsal 6-9 pm	January 13 Rehearsal 6-9 pm	January 14 Rehearsal 6-9 pm	January 15 Rehearsal 6-9 pm	January 16 OFF	January 17 OFF
January 18 Rehearsal 6-9 pm	January 19 Rehearsal 6-9 pm	January 20 Rehearsal 6-9 pm	January 21 Rehearsal 6-9 pm	January 22 Rehearsal 6-9 pm	January 23 OFF	January 24 OFF
January 25 Rehearsal 6-9 pm	January 26 Rehearsal 6-9 pm	January 27 Rehearsal 6-9 pm	January 28 Rehearsal 6-9 pm	January 29 Rehearsal 6-9 pm	January 30 OFF	January 31 OFF
February 1 TECH 5-10pm	February 2 TECH 5-10pm	February 3 TECH 5-10pm	February 4 TECH 5-10pm	February 5 SHOW 730pm	February 6 SHOW 200pm SHOW 730pm	February 7 SHOW 200pm SHOW 730pm
February 8 Rehearsal 6-9 pm	February 9 Rehearsal 6-9 pm	February 10 Rehearsal 6-9 pm	February 11 Rehearsal 6-9 pm	February 12 SHOW 730pm	February 13 SHOW 200pm SHOW 730pm	February 14 SHOW 200pm SHOW 730pm

CHARACTERS:

All characters use some form of British accent/ RP Dialect (Dialect Reference: <https://www.bl.uk/british-accent-and-dialects/articles/received-pronunciation>).

Adult Tracks Available:

MISS AGATHA TRUNCHBULL: Age: 30-50 Open to any gender or ethnicity.

The tyrannical bullying headmistress of Crunchem Hall Primary School. Once a famous athlete, she is described as a "gigantic holy terror", a fierce tyrannical monster" who "marches like a storm trooper with long arms swinging" at Matilda's school, who despises children. Uses her former discipline as an Olympic shot-put champion to terrorize her 'maggot' students. A cruel and sadistic person, but not a brute or brash - rather, sly and conniving, cunning and slinky. Above all, must be a strong actor with a good sense of physicality and characterization. Strong singer and dancer preferred. There are physical demands of this role- physical fitness is crucial. Baritone: A2 to G4

MISS JENNIFER HONEY: Age: 25-35 Open to any ethnicity.

Matilda's kindhearted teacher. A mild, quiet person who never raises her voice and seldom seems to smile. She is adored by every child under her care. She is tired of living in fear under Miss Trunchbull. Sweet, honest, caring, and intelligent, Miss Honey is timid but willing to become brave and stand up to bullies in order to protect her students. Must be a lovely, strong singer and a strong enough actor to make the role truly compelling. Mezzo Soprano: F3 to D5

MR. WORMWOOD: Age: 35-50 Open to any ethnicity.

Matilda's uncaring father. A slimy, scheming used-car salesman, unintentionally hilarious who loves television. "A mean crooked crook" with a penchant for wearing jackets with large, brightly colored checks. Must be a VERY strong actor and comedian. Must also be a relatively strong singer with an ex-punkish rocker voice. Dialect closer to Essex/Estuary/East London <https://www.dialectsarchive.com/england> Baritone: D3 to A4

MRS. WORMWOOD: Age: 30-45 Open to any ethnicity.

Matilda's self-absorbed, negligent mother and an amateur ballroom dancer. Obsessed with her amateur Ballroom dancing partner and her looks. She thinks little of Matilda's unique abilities. She is as loud in her makeup and dress sense as she is in her voice. Must be a VERY strong comedic/character actress, dancer, and strong belt voice with matching vocal stamina. Up to top F/G with higher adlibs. singer able to carry off a sizable comedic role. Dialect

closer to Essex/Estuary/East London <https://www.dialectsarchive.com/england> Mezzo Soprano: A3 to F5

The following will be track roles where the actor will play multiple characters. Hoping to place adult performers but may open to the youth audition as needed. Note specific tracks subject to change.

MRS. PHELPS: Age: 30-70 Open to any ethnicity; African American or non-Caucasian.

Warm and nurturing local librarian who encourages Matilda's love of reading. A kindly librarian and Matilda's friend with inner peace. This will be a track role who will also play: MUM 1 / DANCE COMPETITION COUPLE 1 / SCHOOL COOK.

THE ESCAPOLOGIST: Age: 20-35 Open to any ethnicity.

A character in the story Matilda tells Mrs. Phelps who comes to life in their imagination. Looking for strong dance ability to bring the character to life. High Lyric Baritone: C3 to E4 Vocal range top: E4. Vocal range bottom: C3. DOUBLES AS: Mechanic: A mechanic who works for Mr. Wormwood at the used car lot. DAD 1 / DANCE COMPETITION COUPLE 1.

RUDOLPHO: Age: 20-45 Open to any ethnicity.

Mrs. Wormwood's ballroom dance partner. Must be a strong character actor able to embody different roles using physicality and accent, as well as a VERY strong singer. Ideally genuinely fit and athletic with flare stamina and a character for comedy. Latin ballroom experience a plus. Tenor/High Baritone: D#3 to A4 DOUBLES AS: CHILDREN'S ENTERTAINER: A magical party entertainer at the start of the show featured in "Miracle." Alto, Tenor: F#3 to Eb4

THE ACROBAT: Age: 20-35 Open to any ethnicity.

Beloved wife of the Escapologist who comes to life in Matilda's story to Mrs. Phelps. Seeking a very strong dancer who can convey character and story through movement. Alto, Mezzo Soprano: D4 to A4 May also double in ensemble track. MOM 1 / DANCE COMPETITION COUPLE 2

DOCTOR: Age: Open to any ethnicity.

Mrs. Wormwood's obstetrician when she goes into labor with Matilda. Rock Quality Tenor, Alto: C3 to A4. "Doctor" - The doctor who delivers Matilda. Vocal range top: A4. Vocal range bottom: C3. DOUBLES AS: JUDGE: The judge at Mrs. Wormwood and Rudolpho's dancing tournament.

SERGEI: A Russian Mafia Boss who is physically intimidating, with an accomplished Russian dialect. Baritone. "Sergei" - A Russian mob boss who is physically intimidating who Mr. Wormwood rips off. Dialect: Russian/Eastern European

Young Performers Tracks Available (ages 9 to 20):

MATILDA WORMWOOD: Age: 8-13 Open to any ethnicity.

An intense, clever, and imaginative young girl. She has a thirst for learning and wise beyond her years. Likable and charismatic, not annoying, or pretentious. Honest and unassuming, but with a prankster streak and a strong sense of justice and is willing to break rules for the greater good. Must be a very strong singer and actress, equally. Strong dancing skills preferred but not required. Mezzo Soprano: A3 to D5

MICHAEL WORMWOOD: Age: 10-15 Open to any ethnicity.

Matilda's older, monosyllabic brother. He is not very bright and favored by their parents. Role calls for deadpan comedy and the ability to create character and "bits" throughout the show. Must be a strong comedic actor. Dialect Essex/Estuary/East London Vocal Range C4- E5

The Little Kids in Matilda's classroom: Ages: 8-13 Open to any ethnicity General VOCAL RANGE: C4-E5 Each has important lines and solos, and some have featured dance moments as well. Strong singers, actors, and dancers required.

AMANDA THRIPP: Slight framed girl with the pigtails.

LAVENDER GLOTTLESTOP: Matilda's loud & kooky friend. She has a big personality & likes to have fun. Lavender is squeaky and super-adorable, and what she lacks in intelligence she makes up for in enthusiasm and friendliness.

Vocal Range: C4 to F5

NIGEL: One of Matilda's closer friends at school...

ERIC: The cute, small one...smallest possible....

ALICE: The strong, bold one...

TOMMY: The anxious one...

HORTENSIA" Already a feisty 10, veteran of many Trunchbull battles.

BRUCE BOGTROTTER: Matilda's classmate. He is subject to extreme punishment by Miss Trunchbull. Bruce is a genuine, kind boy with a fondness for sweets; his spirit is broken by the Trunchbull, but he bounces back stronger than ever. Must be a very strong actor and singer with "Revolting Children" monologues, scenes, and solos. Strong dance skills preferred. Vocal range: C4 to E5

THE BIG KIDS ENSEMBLE: Ages: 12-18 Open to any ethnicity.

Bigger in stature than the little kids. These are the older, tougher students at school (much singing and dancing). Featured dancers in several choreography-heavy numbers. Must also have strong acting skills. Strong singers, actors, and dancers required. General VOCAL RANGE: C4-E5

ADDITIONAL ENSEMBLE MAY BE ASSIGNED AS NEEDED.

Registration Instructions

Fees:

Audition/Processing Fee:	\$25.00
Production Fee:	\$250.00* (\$225.00 families with more than one child in the program.)
Total:	\$275.00**

**Production fees for Matilda are due at the time of registration. If you withdraw from the production within 48 hours of the cast list being posted, you will receive a full Production Fee refund. The Audition Fee is non-refundable. The production fee allows CMT to provide children with professional staff, costumes, sets, lighting, materials, and overall experience. Every dollar stays in the program.

Students who plan on finding a business sponsorship shall disclose this in advance by emailing cmtworks@sbcglobal.net.

DUE TO THE CURRENT PANDEMIC, SOCIAL DISTANCING AND MASKS MAY BE REQUIRED. PARENTS MUST DROP OFF AND PICK UP UNTIL RESTRICTIONS ARE LIFTED (NO WATCHING). DETAILED RULES AND INSTRUCTIONS WILL BE PROVIDED TO ENROLLEES PRIOR TO START DATE.

****PAYMENT IS DUE TO SECURE PLACEMENT IN CLASS.**

TWO-STEP REGISTRATION PROCESS:

- 1) Secure your position in class by registering at: <https://forms.gle/3GhsmKXpJqxo6ydP8>
- 2) Pay Online to Secure Placement: <https://checkout.square.site/buy/DLO26YMHUSMKZLG6KIP6FN4>

*Note: Payment link will also be provided in your registration confirmation.

Once you have registered and paid, your position in the program is secured. Registration is on a first come first served basis. Typically, all children are cast. However, if Covid-19 restrictions in October require that we limit the number of cast members, we will notify all and provide a refund if needed.

WANT TO HELP ANOTHER STUDENT WITH TUITION? YOUR SPONSORSHIP WOULD BE TAX DEDUCTIBLE. E-MAIL FOR MORE INFO TO CMTWORKS@SBCGLOBAL.NET.